



A visitor's guide to using public transport in Merseyside


# Welcome to Merseyside

If you are visiting Merseyside for a holiday or short break you are probably aware of all the attractions the area has to offer, but are not sure how to get out and about to see them. Taxis can be expensive, especially if you want to stop off along the way. A hire car will give more freedom but it's not so easy if you don't know the way or are not very confident driving on the left hand side of the road.

## Why not use buses, trains or ferries?

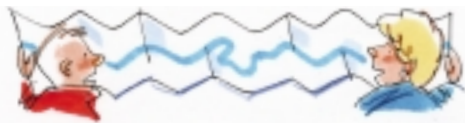
Merseyside has a great public transport network and it's really easy to use.



Look out for the yellow colour and  symbol and you will know you're on our network.

## Information

You will probably need help to plan your journey. There is lots of information available.



## Traveline

Travel Information  0870 608 2 608  
National Call Rate  
OPEN 8AM TILL 8PM 7 DAYS A WEEK  
[www.merseytravel.gov.uk](http://www.merseytravel.gov.uk)

This is a telephone enquiry line which is open 0700-2000 Mondays to Fridays and 0800-2000 Saturdays, Sundays and Bank Holidays.



Our staff are friendly and helpful and can tell you which bus, train or ferry you need, where to catch them, times and which ticket would be best for you.

## Website



The Merseytravel website, [www.merseytravel.gov.uk](http://www.merseytravel.gov.uk) has lots of information about bus, train and ferry services as well as ideas for places to go and things to do and most importantly, a journey planner.

You type in where you are (for example your hotel) and where you want to go (Liverpool Football Club) and it will give you details of how to get there, including maps

## Travel Centres

There are 7 Travel Centres in Merseyside, 2 in Liverpool City Centre (Queen Square and Paradise Street Interchange), and one each in Bootle, Birkenhead, Huyton, St Helens and Southport.



The friendly and helpful staff can give you the same type of information as Traveline and can also give you copies of leaflets and timetables. They can sell you a one-day off-peak ticket, Saveaway (see right) or even a day excursion, if you fancy going further afield.

## Mersey Ferries Centres



There are 3 Ferries Centres, at Woodside, Seacombe and the Pier Head. Staff there can give you information and sell tickets for the Mersey Ferries Cruises.

## Tickets

You can pay for each bus or train journey as you board but if you are going to make more than one return journey a day you may find it cheaper to use a Saveaway Ticket.



A Saveaway is a one-day, off-peak\* ticket that you can use as many times as you like on any bus or train in Merseyside. You can use them on the Mersey Ferries too but only on a cross river trip, not on one of the cruises.

Saveaways are on sale at all our Travel Centres, Merseyrail Stations and at nearly 500 outlets across Merseyside. To find out your nearest agent call Traveline or check out the Merseytravel website at [www.merseytravel.gov.uk/points\\_of\\_sale.asp](http://www.merseytravel.gov.uk/points_of_sale.asp)

Off-peak times are:  
Monday to Friday: 0930-1600 and 1800 – last journey.  
Saturday, Sunday and Bank Holiday: all day.

You can buy a Saveaway in advance, then on the day you want to use it you scratch off the day, month and year and seal the ticket.

## Buses

There are many bus operators in Merseyside but the three biggest are Arriva, Stagecoach and First. They all display their route number and destination on the front of the bus.

As a general guide buses tend to run between 0600 and 2300 but there are night buses which run all night on Fridays and Saturdays. Check the times before you travel.

The bus will stop when you are standing at a bus stop if you put your hand out.

You pay the driver when you board the bus. Please try to have some change with you, drivers can give you change but prefer to be given the correct money.

Take your ticket from the machine next to the driver.

If you have a Saveaway Ticket show it to the driver as you get on the bus.

If you are not sure which is your stop, ask the driver to tell you when you get there.

Some seats near the front of the bus are for elderly or disabled



people. You may use them but please give them to elderly or disabled people if they board the bus.



Smoking is not allowed on any bus in Merseyside.

A ticket inspector may board the bus and ask to see your ticket or Saveaway. Please show your ticket or Saveaway when asked.

When you are near your stop, press one of the stop buttons to let the driver know you want to get off.

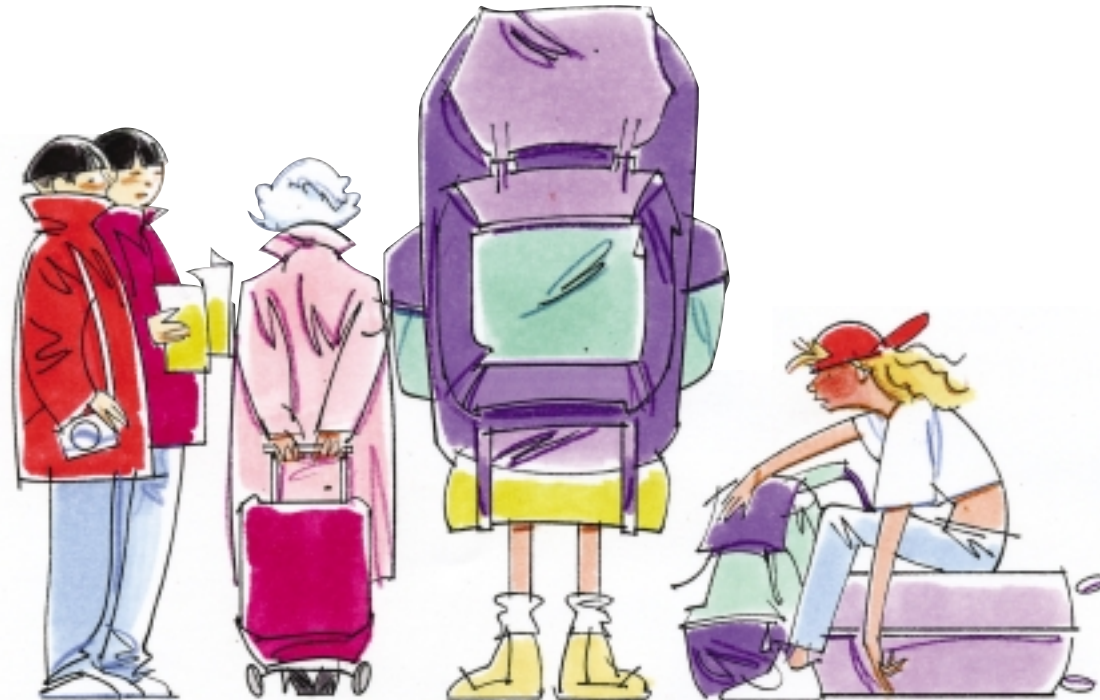


Most buses are low floor buses, which are easy to get on and off, even with wheelchairs, buggies or heavy shopping.



## Trains

Merseyside has a frequent and reliable train service, which can take you to many places of interest.



Trains generally run between 0600 and 2300 check the times before you travel.

Buy your train ticket or Saveaway at the ticket office in the station.



Keep your ticket or Saveaway handy in case an inspector boards the train. If you do not have a valid ticket you may be fined £20.

On some trains the doors will open automatically, whilst on others you may have to press a button.

All trains call at all stations on the route.



We are working very hard to make the Merseyrail network fully accessible but some stations are very old and may be difficult to use, particularly with a pram or wheelchair.

If you think you may have problems and want to check before your journey ring

### Northern and Wirral Lines

(blue or green lines on the map)  
0151 702 2071 – Monday-Friday  
0900 to 1700  
0151 702 2704 – all other times

**City Line** (red line on the map)  
08456 008 008



### Mersey Ferries

Mersey Ferries have three terminals, Pier Head in Liverpool, Seacombe in Wallasey and Woodside in Birkenhead.

You can use Mersey Ferries to simply cross from one side of the river to the other. (Between 0730 to 0930 and 1600 to 1915, Mondays to Fridays) check the times before you travel. You ask at the booking office in the terminal for a cross river ticket or show your Saveaway. You will be given a boarding ticket which you must show as you get on board.



A cruise ticket allows you to stay on board for the River Explorer Cruise up and down the River Mersey. There is a commentary giving lots of interesting facts about the sights along the way and you can buy refreshments on board.

River Explorer Cruises operate from 1000 to 1500 on Mondays to Fridays, and 1000 until 1800 on Saturdays, Sundays and Bank Holidays. Check the times before you travel.

There are also special cruises during the summer months along the Manchester Ship Canal to Salford. Other special cruises include party nights, bird watching, fireworks and children's Christmas parties. Full details are on the Mersey Ferries website or you can ring 0151-330 1444.



All ferries terminals are fully-accessible but the gangway down to the ferries may be steep at certain times of day because of the tides. Staff will be happy to help wheelchair users.

The main deck of the ferry is accessible and there are accessible toilets on this level but other decks on the ferry can only be reached by steep steps.



**For details of how to get to...**

# Anywhere in Merseyside

**by bus train, and ferry.**

**Travel Information**  **0870 608 2 608**  
National Call Rate

**OPEN 8AM TILL 8PM 7 DAYS A WEEK**

**www.merseytravel.gov.uk**



**24 Hatton Garden, Liverpool L3 2AN**

**Telephone: 0151 227 5181**

**[www.merseytravel.gov.uk](http://www.merseytravel.gov.uk)**